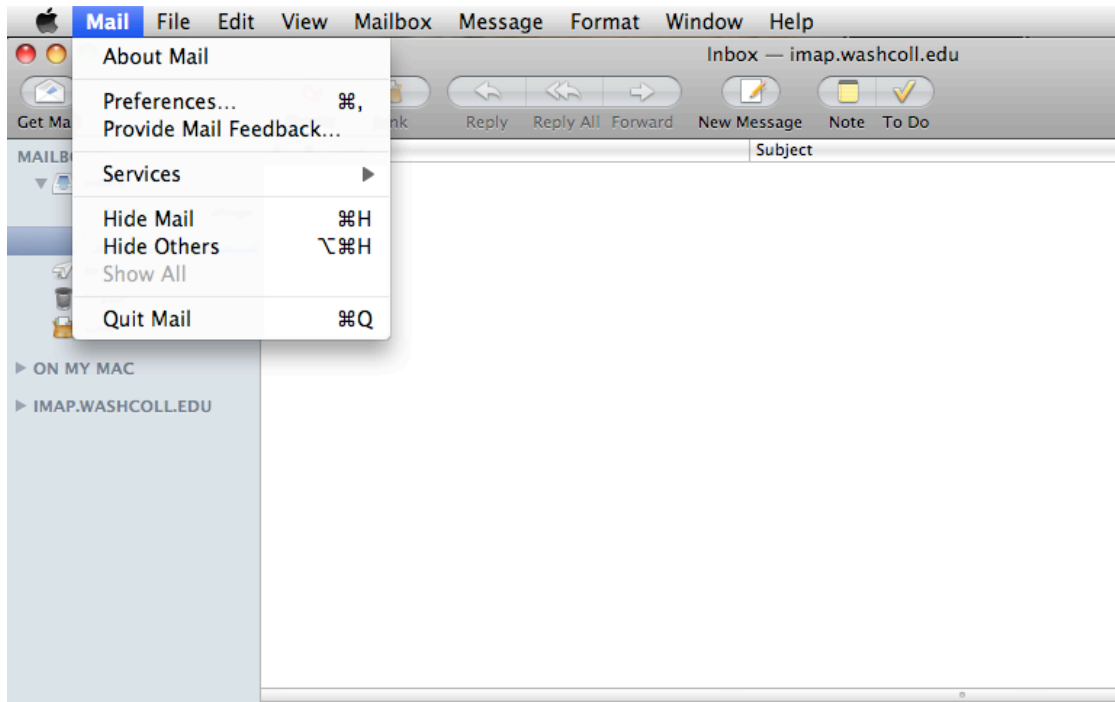


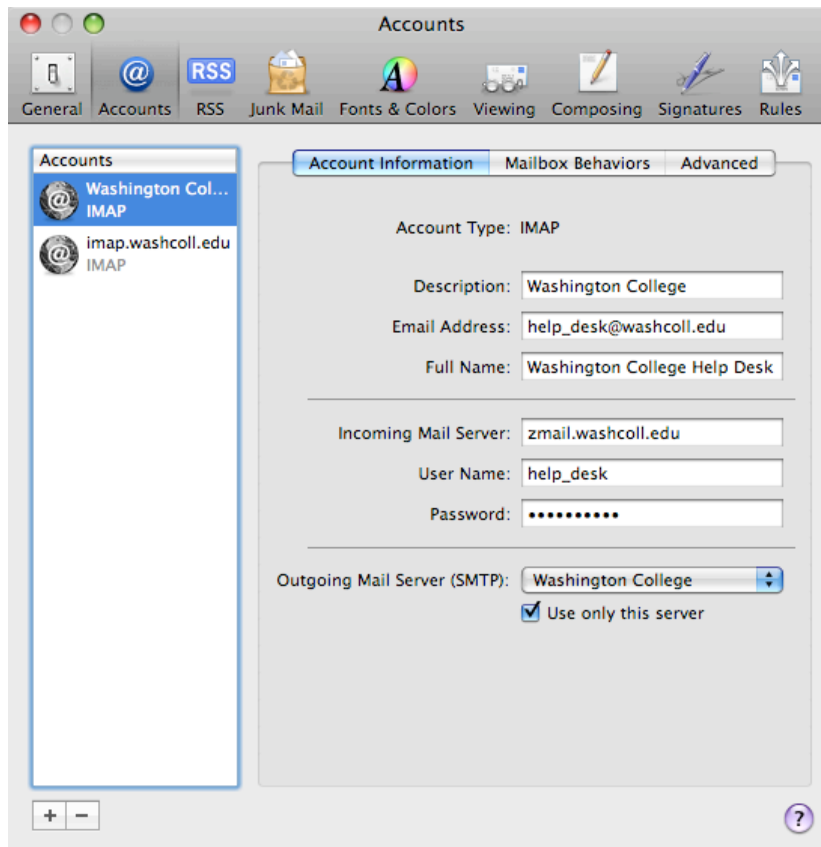


Mail (MAC OS) Server Settings for WC Email

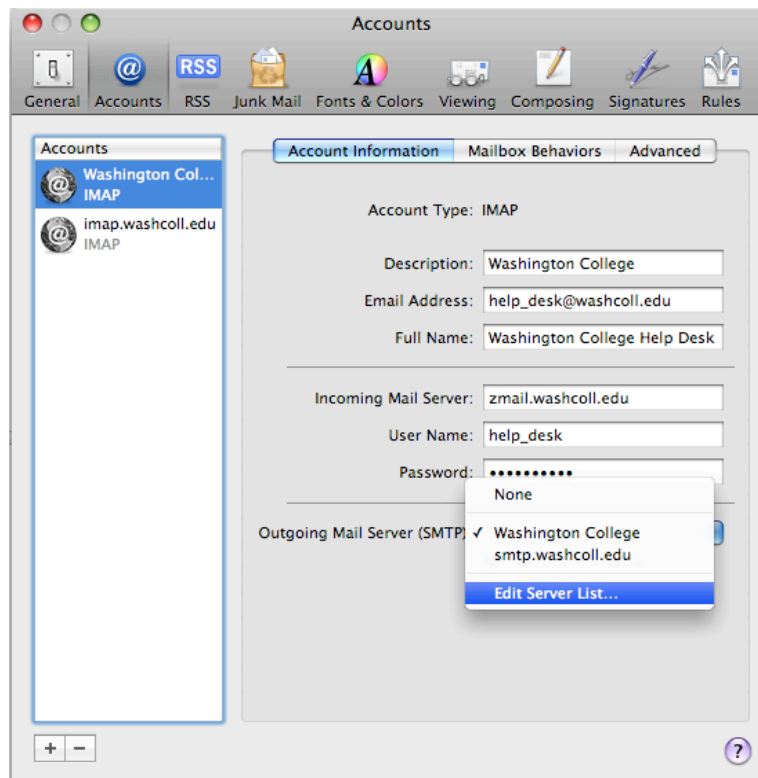
1. Open Mail. Click **Mail** and select **Preferences**



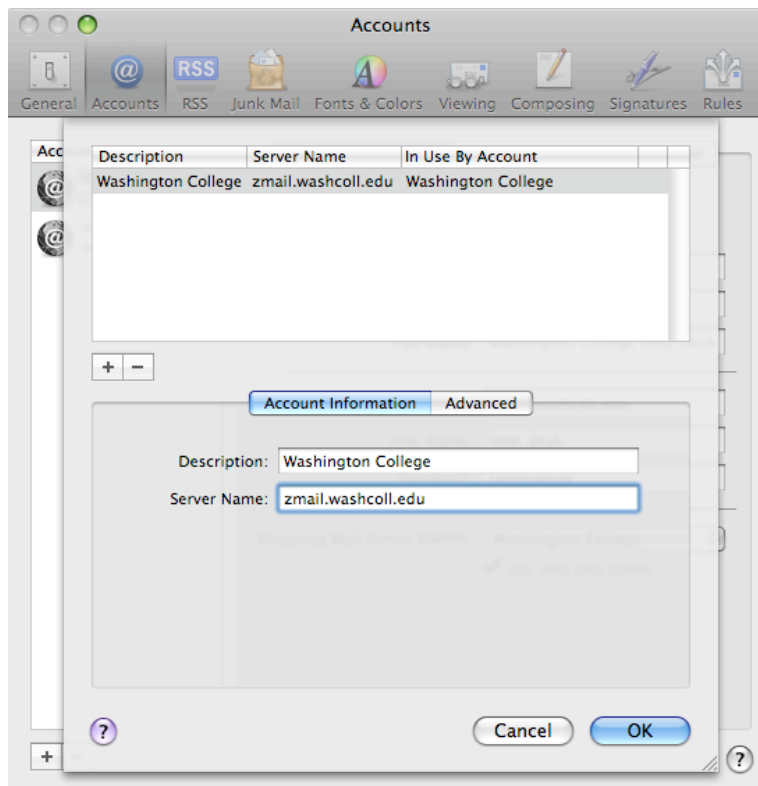
2. Click on the **Accounts** tab. The incoming server should be: **zmail.washcoll.edu**



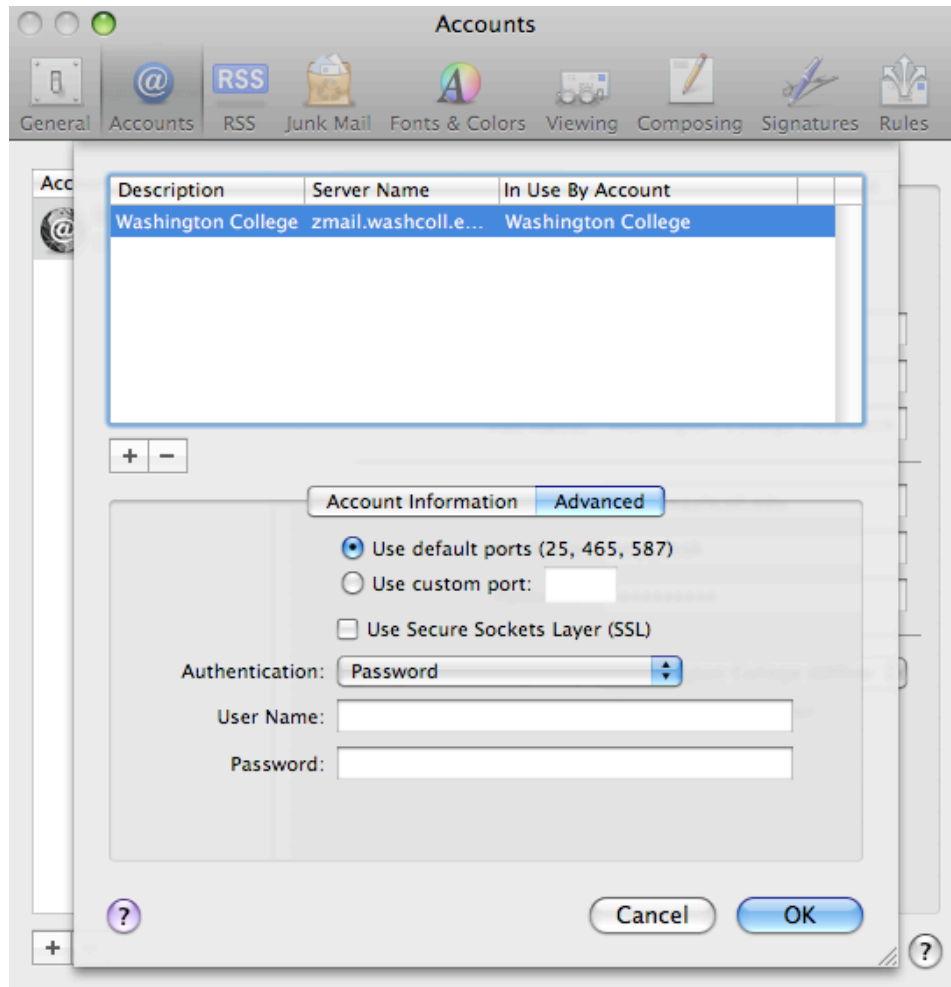
3. Click on the **Outgoing Server (SMTP)**. Select the **Edit Server List**.



4. The outgoing server name should be **zmail.washcoll.edu**



5. Click on the **Advanced** tab and select "**Password**" in the Authentication section. Enter your Username and Password.



5. Click **OK**